



TECHNICAL DATA – ENGLISH

PANBETON® TIMBER

DESIGN : JEAN-PHILIPPE NUEL

DIMENSIONS : 2600 x 900 x 19 mm | 102.36" x 35.43" x 0.75"

CONCRETE LCDA

8 rue Copernic 49240 Avrillé - FRANCE

T. +33 (0) 2 41 33 99 10 F. +33 (0) 9 70 32 65 61

CONTACT@CONCRETE-BETON.COM

WWW.CONCRETE-BETON.COM

PANBETON®

ULTRA-LIGHTWEIGHT CONCRETE CLADDING

Panbeton® is a unique technology of ultra-lightweight concrete cladding. These slabs are quick and easy to install for wall and ceiling covering. It is the ideal covering to dress up a space with concrete.









- > A large lightweight and easy to cut slab.
- > Front made of genuine raw concrete
- > A simple attachment system
- > Quick installation with little handling
- > Endless customisation possibilities.



TECHNICAL SHEET (INCH)

CONCRETE LCDA

	DIMENSIONS	2600 x 900 mm 102.36" x 35.43" (General tolerance +/- 3 mm 0.12")
	ORTHOGONALITY	+ /- 1.0 %
	SURFACE AREA	+ /- 1.0 %
	THICKNESS	19 mm 0.75"
	WEIGHT	35 Kg 77 lbs (+/- 20 %)
	WEIGHT PER SQM	12 to 18 kg/m² 25 lbs to 30 lbs /m²
	COMPOSITION	> Fibre-reinforced concrete > Construction panel
	SEALER TREATMENT	As an option (water-borne acrylic base)
	MOUNTING & BONDING	Glue Hybrifix 550 DEN BRAVEN
	SUBSTRATES	Is glued to all substrates (plasterboard, bricks, breeze-blocks, etc.)
	CUTTING	Diamond blade (continuous-rim). outer corner possible, drilling with diamond-coated hole saw...

	FIRE CLASSIFICATION	> Euroclass B-s1, d0 > [OPTION] A2-s1d0 (with specific support : gypsum fiber board) > ASTM E84 : Class A Smoke index : 0 Flame spread index : 0
	HEAT RESISTANCE	Up to 60°C Up to 140 °F
	THERMAL SHOCK	Resistant
	LIGHT RESISTANCE	No impact
	VOC CLASSIFICATION	A+
	ACOUSTIC	Neutral
	EXCLUDED	Exterior, floor, shower stall. Not suitable for direct and continuous contact with water.
	SPECIFIC NOTES RELATED TO THE MODEL	Available in three different plank designs. Each design has its own wood grain pattern.

USE THIS ENTIRE DESCRIPTION TO SPECIFY OUR PRODUCTS.

COMPANY NAME		Concrete LCDA
TECHNICAL DATA	MORTAR	<p>Fibre-Reinforced shrinkage-compensating repair mortal.</p> <p>Non-shrinking mortal composed of sand, special cement, fibres and admixtures.</p> <p>Compressive strength: Class R2</p> <p>Chloride ion content: ≤ 0.05%</p> <p>Bonding : ≥ 0.8 MPa</p>
	REINFORCED FIBRE	High Zirconia 17%+ Alkali Resistant Glass Fibre.
	CONSTRUCTION PANEL	Rigid extruded polystyrene foam finished on both sides with a polymer-modified mortar facing, reinforced with a glassfibre mesh fabric.

COMPOSITION

Slice view



9 MM | 0.35"

10 MM | 0.39"

FIBRE-
REINFORCED
CONCRETE

CONSTRUCTION
PANEL



FINISHES



Light Pitted



Medium Pitted



Heavy Pitted

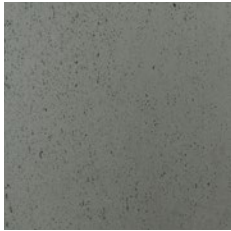
COLORS



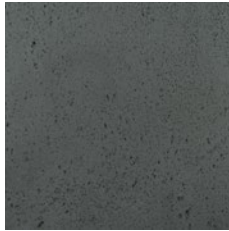
200 - Natural Grey



217 - Slate Grey



216 - Anthracite Grey



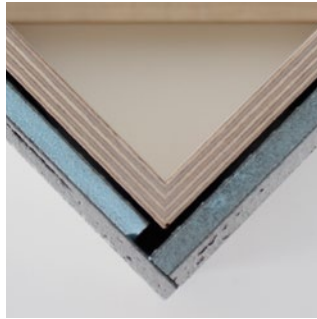
209 - Black



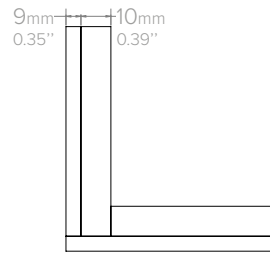
1 - BOARD TO BOARD JOIN



Front view

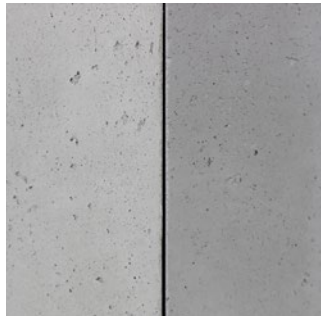


Top view

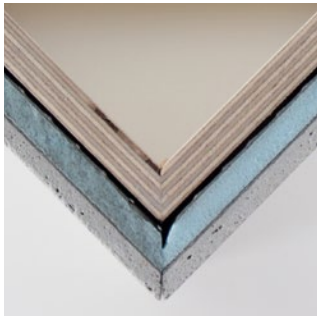


Schema

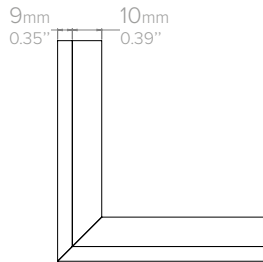
2 - OUTER CORNER*



Front view



Top view

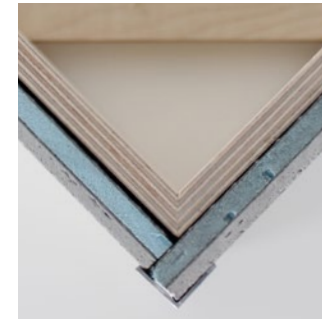


Schema

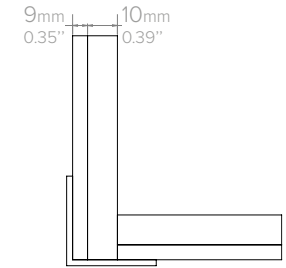
3 - TOP CORNER IRON



Front view

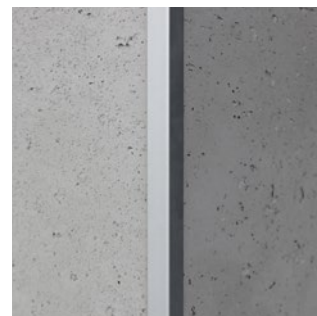


Top view

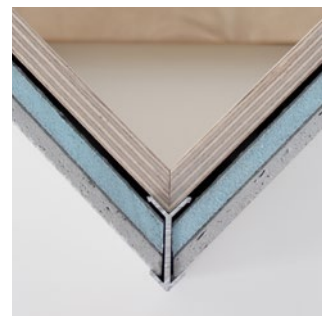


Schema

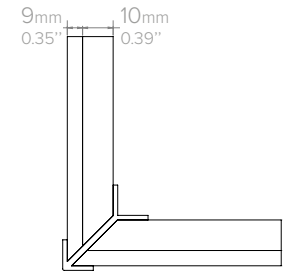
4 - IRON CORNER*



Front view

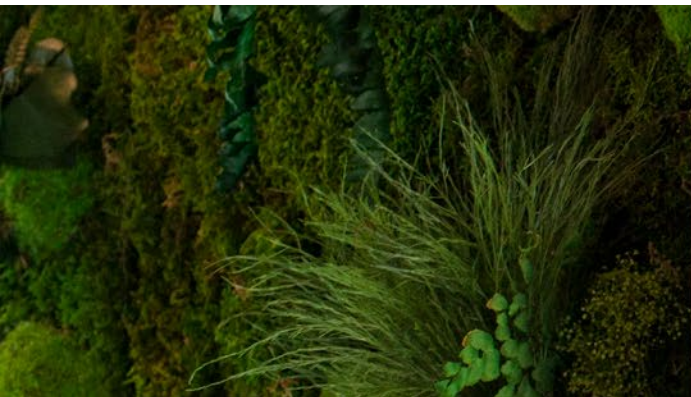


Top view



Schema

*45 degree cuts can be made at the Concrete LCDA factory (as an option).



INSTALLATION TOOLS



PROTECTIVE GLOVES



SAFETY HEADPHONES



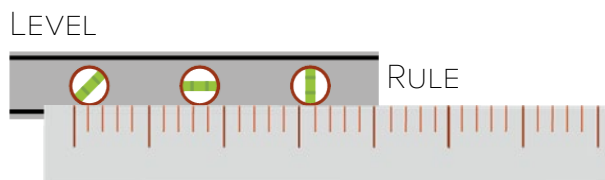
PROTECTIVE GLASSES



DUST MASK



HAND BRUSH

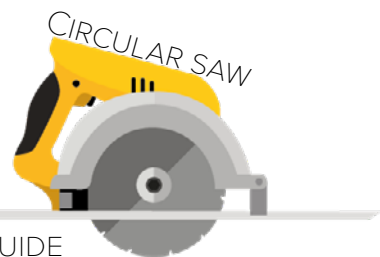


LEVEL

RULE

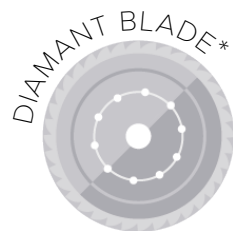


MALLET



CIRCULAR SAW

& GUIDE RAIL



DIAMANT BLADE*

REDUCER RING*



*Available in the cut kit (as an option)



GLUE GUN



GLUE HYBRIFIX 550 DEN BRAVEN SEALANTS (recommended)

INSTALLATION STEPS

FR

1



CLEAN THE AREA BEFORE THE INSTALLATION

2



TAKE WALL MEASUREMENTS BEFORE CUTTING THE PANEL

3



COPY YOUR MEASUREMENTS ON THE PANEL

4



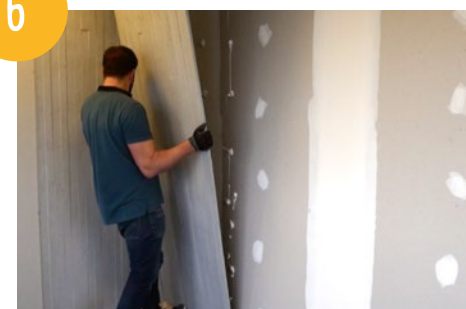
CUTTING WITH THE USE OF A GUIDE RAIL

5



APPLY GLUE ON THE WALL (OR ON THE BACK OF THE PANEL)

6



PLACE THE PANEL STARTING WITH THE BOTTOM

INSTALLATION VIDÉOS STEP BY STEP TO SEE

ON OUR YOUTUBE CHANNEL @CONCRETE LCDA

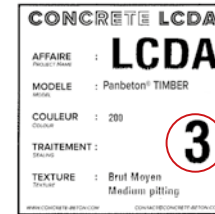


> [PANBETON®](#)

> [SLIMBETON®](#)



These three designs are marked with numbers 1, 2 and 3 indicated on the labels of each panel :



Do not put two of the same designs together:

A 10x10 grid with a red 'X' drawn across it. The number '1' is written in the center of the grid, specifically in the intersection of the 5th and 6th columns and the 5th and 6th rows.