



TECHNICAL DATA - ENGLISH

SLIMBETON[®] FORMWORK

DIMENSIONS : 1200 x 800 x 7 mm | 47,24" x 31,50" x 0.28"

CONCRETE LCDA

8 rue Copernic 49240 Avrillé - FRANCE

T. +33 (0) 2 41 33 99 10 F. +33 (0) 9 70 32 65 61

CONTACT@CONCRETE-BETON.COM

WWW.CONCRETE-BETON.COM

PRODUCT PRESENTATION

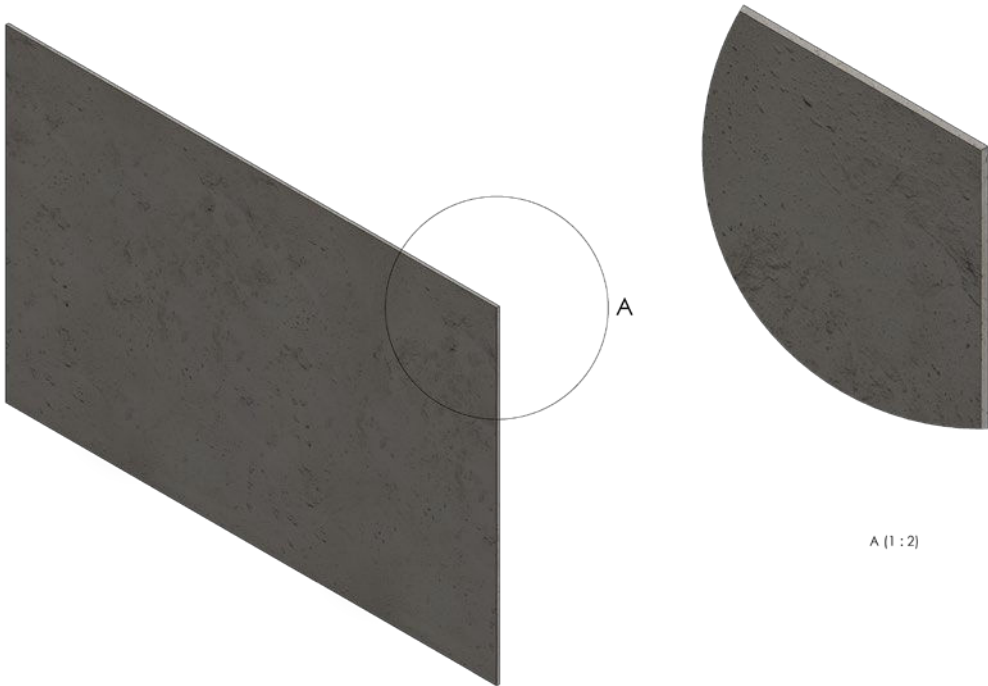
SLIMBETON®

THE ULTRA THIN CONCRETE PANEL

Concrete LCDA is pleased to introduce Slimbeton®: a generation of lightweight concrete wall cladding. The patent developed by our company in 2015 allows us to offer 7mm thick fibre reinforced concrete cladding. Slimbeton® can also be fitted as decorative panels to dress up furniture, kitchens and any other substrate.

Slimbeton® is available in three ranges: Classic, Scaffolded 2mm Wand Formwork, in 3 different finishes: light, medium and heavy pitted.

- Competitive price
- Quick installation
- Single dimension



TECHNICAL SHEET (MM)

EN

TECHNICAL SHEET (INCH)



INFORMATIONS TECHNIQUES :

Matière : Béton fibré ultra haute performance

Poids : 12 Kg

Tolérance générale +/- 3 mm

TECHNICAL INFORMATIONS :

Material : Fiber High performance concrete

Weight : 12 kg

General tolerance : +/- 3 mm



TECHNICAL INFORMATIONS :

Material : Fiber High performance concrete

Weight : 26.5 LBS

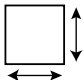
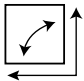
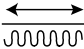





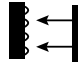
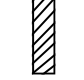
General tolerance : +/- 0.12 in





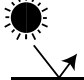





CONCRETE LCDA			8 rue Copernic 49240 Avrillé www.concrete-beton.com		
Date		Nom	N°plan	Echelle : Scale :	Ep :
LE				SLIMBETON® COFFRAGE	
LE				SLIMBETON® FORMWORK	
LE				1200 x 800 x 7	
LE				STUDIO LCDA	
Surface : m²			Bon pour accord :		
Unités : mm			Agreement for production :		
Unités : mm			FEUILLE 1 SUR 1		
Poids : Kg			SHEET 1 OF 1		
Weight : kg					

CONCRETE LCDA			8 rue Copernic 49240 Avrillé www.concrete-beton.com		
Date		Name	N°plan	Scale :	Ep :
				SLIMBETON® FORMWORK	
				1200 x 800 x 7	
				STUDIO LCDA	
Surface :			Agreement for production :		
Units : in					
Weight : LBS			SHEET 1 OF 1		

Ce dessin est la propriété de la société LCDA. Toute reproduction sans notre accord préalable est interdite.
This drawing is the property of LCDA. Reproduction without our permission is prohibited.

	DIMENSIONS	1200 x 800 mm 47.24" x 31.49" (General tolerance +/- 3 mm 0.12")
	ORTHOGONALITY	+ /- 1.0 %
	SURFACE AREA	+ /- 1.0 %
	THICKNESS	7 mm 0.28"
	WEIGHT	12 Kg 26.45 lbs (+/- 20 %)
	WEIGHT PER SQM	12,5m² 27.56 lbs /m²
	COMPOSITION	Fibre-reinforced concrete
	SEALER TREATMENT	As an option (water-borne acrylic base)
	MOUNTING & BONDING	Glue Hybrifix 550 DEN BRAVEN
	SUBSTRATES	Is glued to all substrates (plasterboard, bricks, breeze-blocks, etc.)

	CUTTING	Diamond blade (continuous-rim). outer corner possible, drilling with diamond- coated hole saw...
	FIRE CLASSIFICATION	> A1 & Euroclass B-s1, d0 > ASTM E84 : Class A Smoke index : 0 Flame spread index : 0
	HEAT RESISTANCE	Up to 60°C Up to 140 °F
	THERMAL SHOCK	Resistant
	LIGHT RESISTANCE	No impact
	VOC CLASSIFICATION	A+
	ACOUSTIC	Neutral
	EXCLUDED	Exterior, floor, shower stall. Not suitable for direct and continuous contact with water.

USE THIS ENTIRE DESCRIPTION TO SPECIFY OUR PRODUCTS.

COMPANY NAME		Concrete LCDA
TECHNICAL DATA	MORTAR	<p>Fibre-Reinforced shrinkage-compensating repair mortal.</p> <p>Non-shrinking mortar composed of sand, special cement, fibres and admixtures.</p> <p>Compressive strength: Class R2 Chloride ion content: $\leq 0.05\%$ Bonding : ≥ 0.8 MPa</p>
	REINFORCED FIBRE	High Zirconia 17%+ Alkali Resistant Glass Fibre.

COMPOSITION

Slice view



7 MM | 0.28"

FIBRE-
REINFORCED
CONCRETE

FINISHES



Light Pitted



Medium Pitted



Heavy Pitted

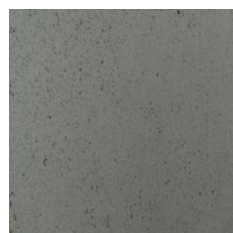
COLORS



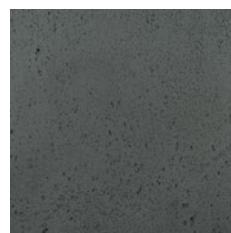
200 - Natural Grey



217 - Slate Grey



216 - Anthracite Grey



209 - Black



402 - White



404 - Stone



205 - Brown



269 - Luzerne



473 - Ouarzazate

CORNER CUTTING

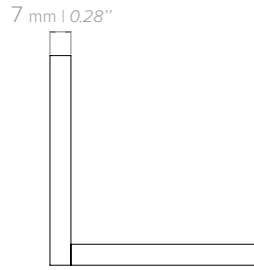
1 - BOARD TO BOARD JOIN



Front view

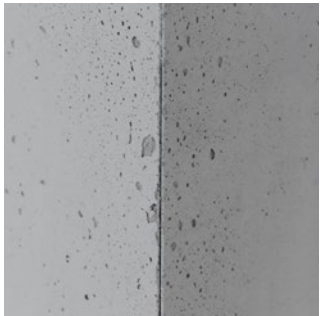


Top view

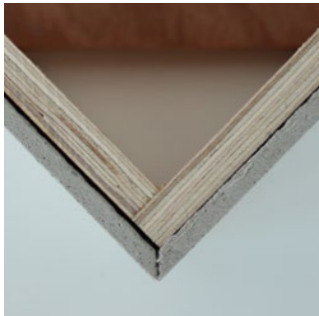


Schema

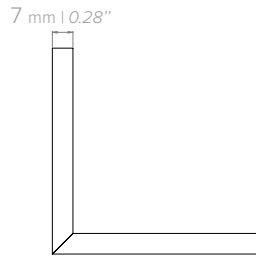
2 - OUTER CORNER*



Front view



Top view



Schema

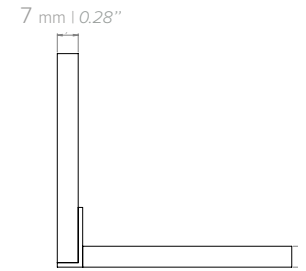
3 - TOP CORNER IRON



Front view

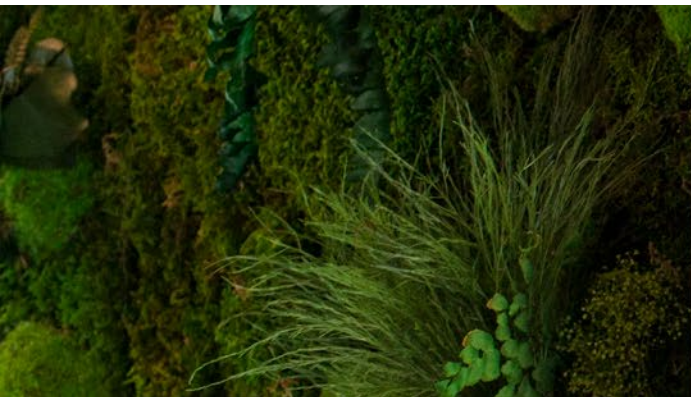


Top view

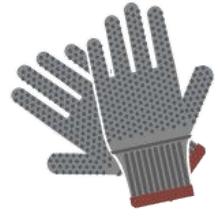


Schema

*45 degree cuts can be made at the Concrete LCDA factory (as an option).



INSTALLATION TOOLS



PROTECTIVE GLOVES



SAFETY HEADPHONES



PROTECTIVE GOGGLES

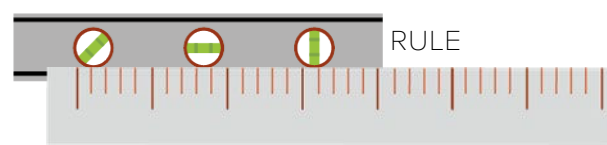


DUST MASK

HAND BRUSH



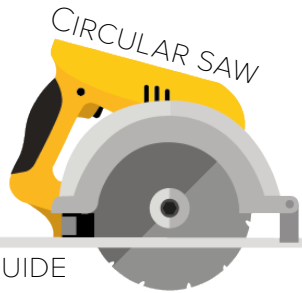
LEVEL



RULE



MALLET



CIRCULAR SAW

& GUIDE RAIL



DIAMOND BLADE

REDUCER RING*

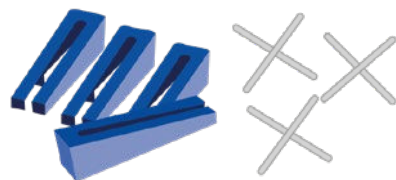


*Available in the cutting kit as an option



GLUE GUN

ADHESIVE CARTRIDGE HYBRIFIX 550 DEN BRAVEN SEALANTS (recommended)



SPACERS FOR LEVELLING SYSTEM & CROSSPIECES FOR SETTING WITH JOINTS

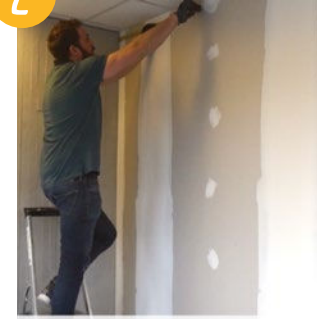
INSTALLATION STEPS

1



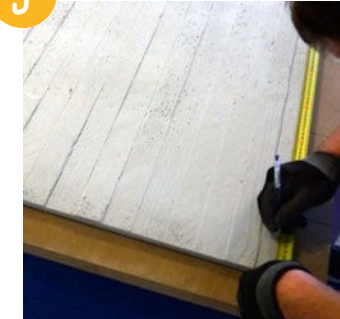
CLEAN THE AREA BEFORE THE INSTALLATION

2



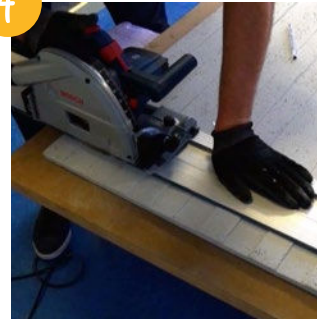
TAKE WALL MEASUREMENTS BEFORE CUTTING THE PANEL

3



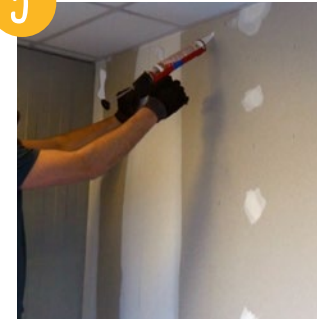
COPY YOUR MEASUREMENTS ON THE PANEL

4



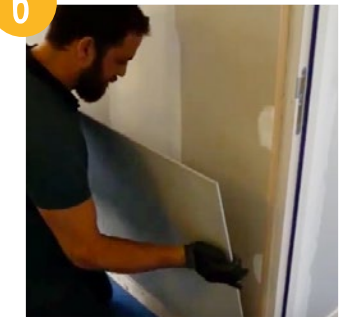
CUTTING WITH THE USE OF A GUIDE RAIL

5



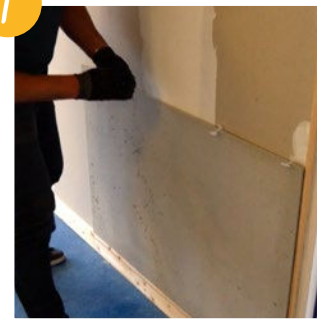
APPLY GLUE ON THE WALL (OR ON THE BACK OF THE PANEL)

6



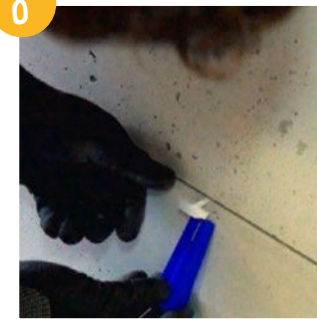
PLACE THE PANEL STARTING WITH THE BOTTOM

7



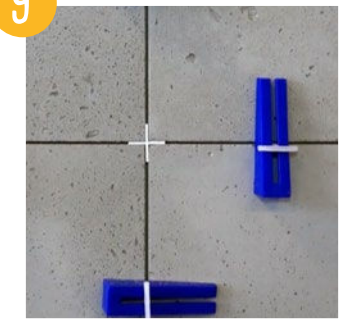
POSITION THE WEDGES AT REGULAR SPACES

8



THEN THE BLUE WEDGES

9



AND THE CROSS PIECES

INSTALLATION VIDEOS STEP BY STEP TO SEE ON OUR YOUTUBE CHANNEL @CONCRETE LCDA



> [SLIMBETON®](#)